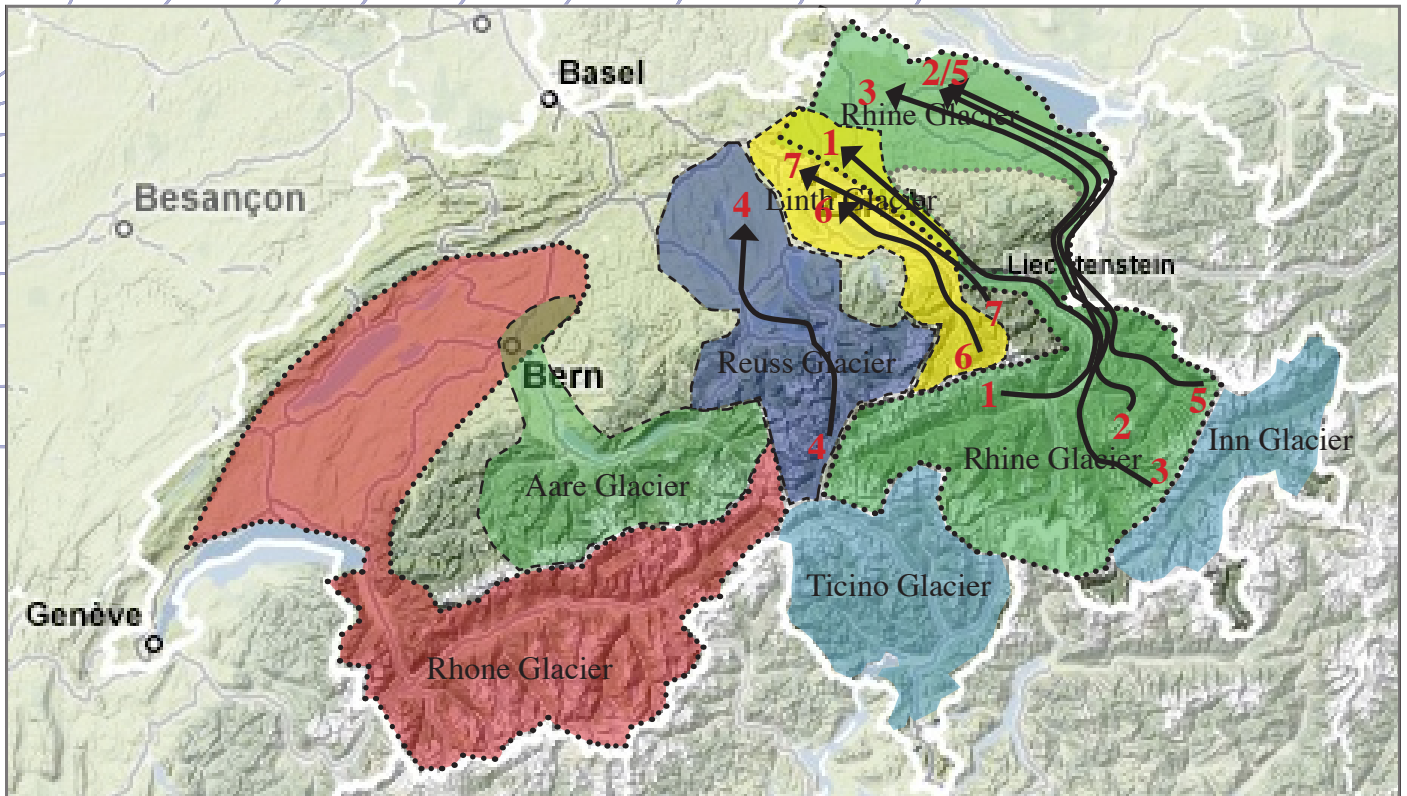


Glaciations



Show on the map the origin, path and current location of erratic boulders following the indications provided in the table below.

Name, description	Probable origin	Current location	Glacier
1 Punteglias granite with light feldspar, quartz	Aare group Val Punteglias	Volketswil ZH	Rhine
2 Serpentine with traces of talc, rounded	Arosa and Oberhalbstein	Müllheim TG	Rhine
3 Giulia granite with dark chlorite	Giulia and Albula area	Andelfingen ZH	Rhine
4 Slate, conglomerate with light rocks of volcanic origin	Uri Canton Bristenstock area	Muri AG	Reuss
5 Large grain granite with feldspar	Silvretta area	Müllheim TG	Rhine
6 Fine rubble with nephrite, rounded	Glarus	Meilen ZH	Linth
7 Conglomerate with white and reddish quartz veins	Glarus Walensee	Zürich ZH	Linth Rhine